



ABA - Cherry County

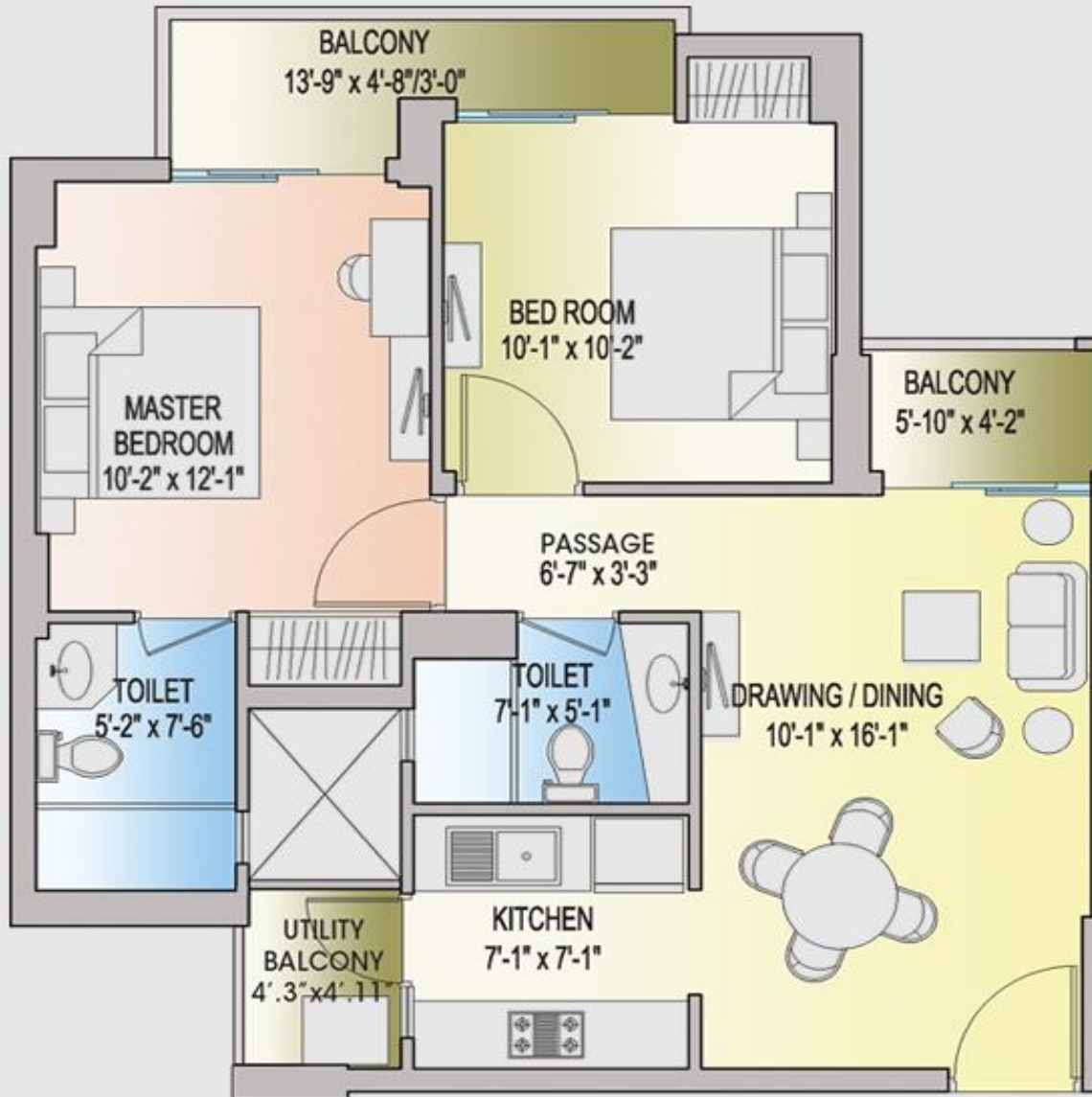
Greater Noida West

Site Plan



 2-BHK (891 sq. ft.)	1. Amphitheatre	6. Swimming Pool
 3-BHK (1206 sq. ft.)	2. Evening Garden	7. Tennis Court
 3-BHK + 3T. (1521 sq. ft.)	3. Kids Play	8. Aroma Garden
 3-BHK + 3T. + SER. (1620 sq. ft.)	4. Tree Court	9. Half Basketball Court
 4-BHK + 4T. + SER. (2232 sq. ft.)	5. Club	10. Commercial Building

Floor Plans – 2BHK+2T – 891 sqft



2 BHK + 2T

Saleable Area - 891 Sq. Ft.

Built-up Area - 746 Sq. Ft.

**Cherry
County**

**2/3/4 BHK APARTMENTS
NOIDA EXTENSION**

Floor Plans – 3BHK+2T – 1206 sqft



3 BHK + 2T

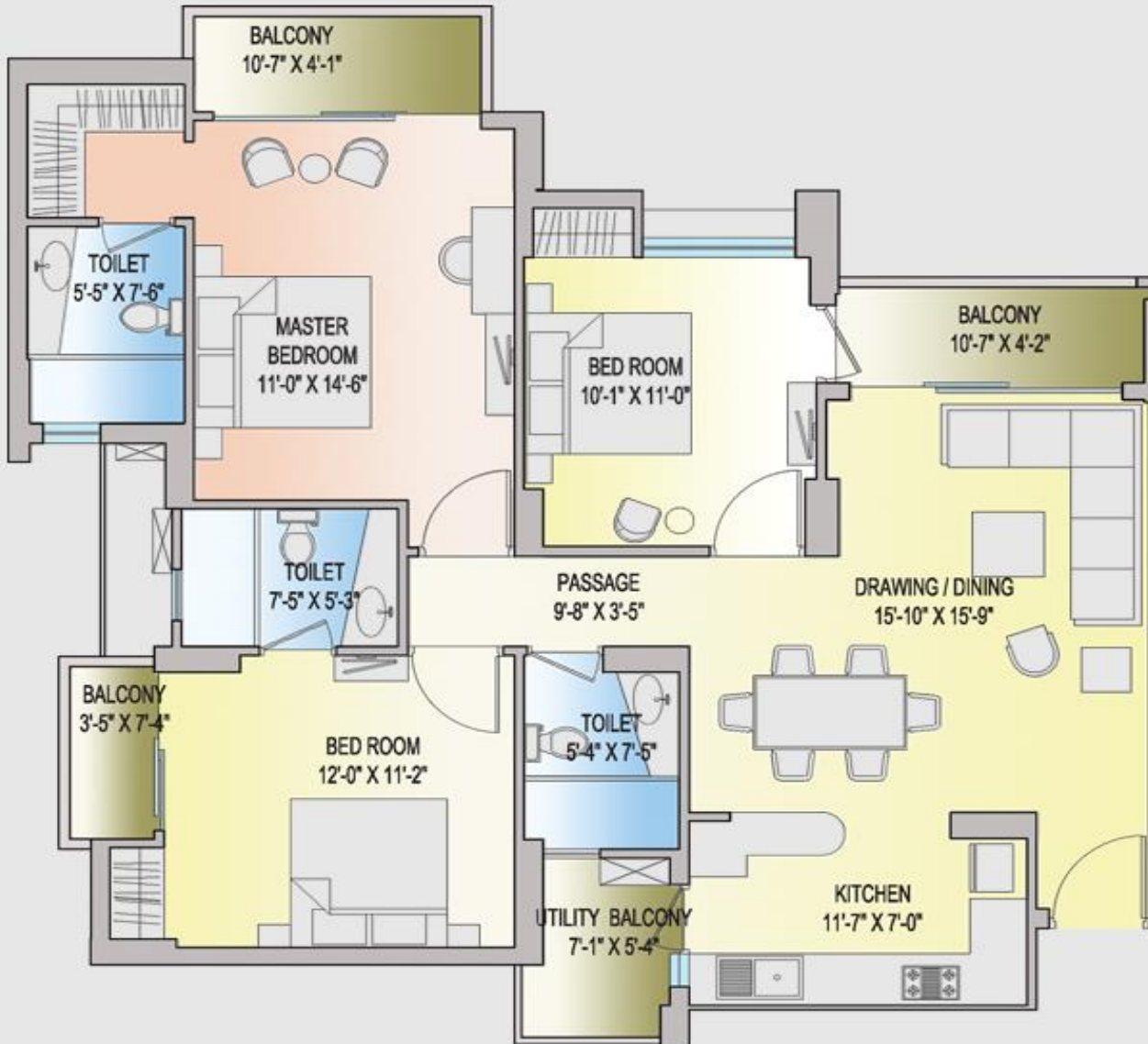
Saleable Area - 1206 Sq. Ft.

Built-up Area - 964 Sq. Ft.

**Cherry
County**

2/3/4 BHK APARTMENTS
NOIDA EXTENSION

Floor Plans – 3BHK+3T – 1521 sqft



3 BHK + 3T

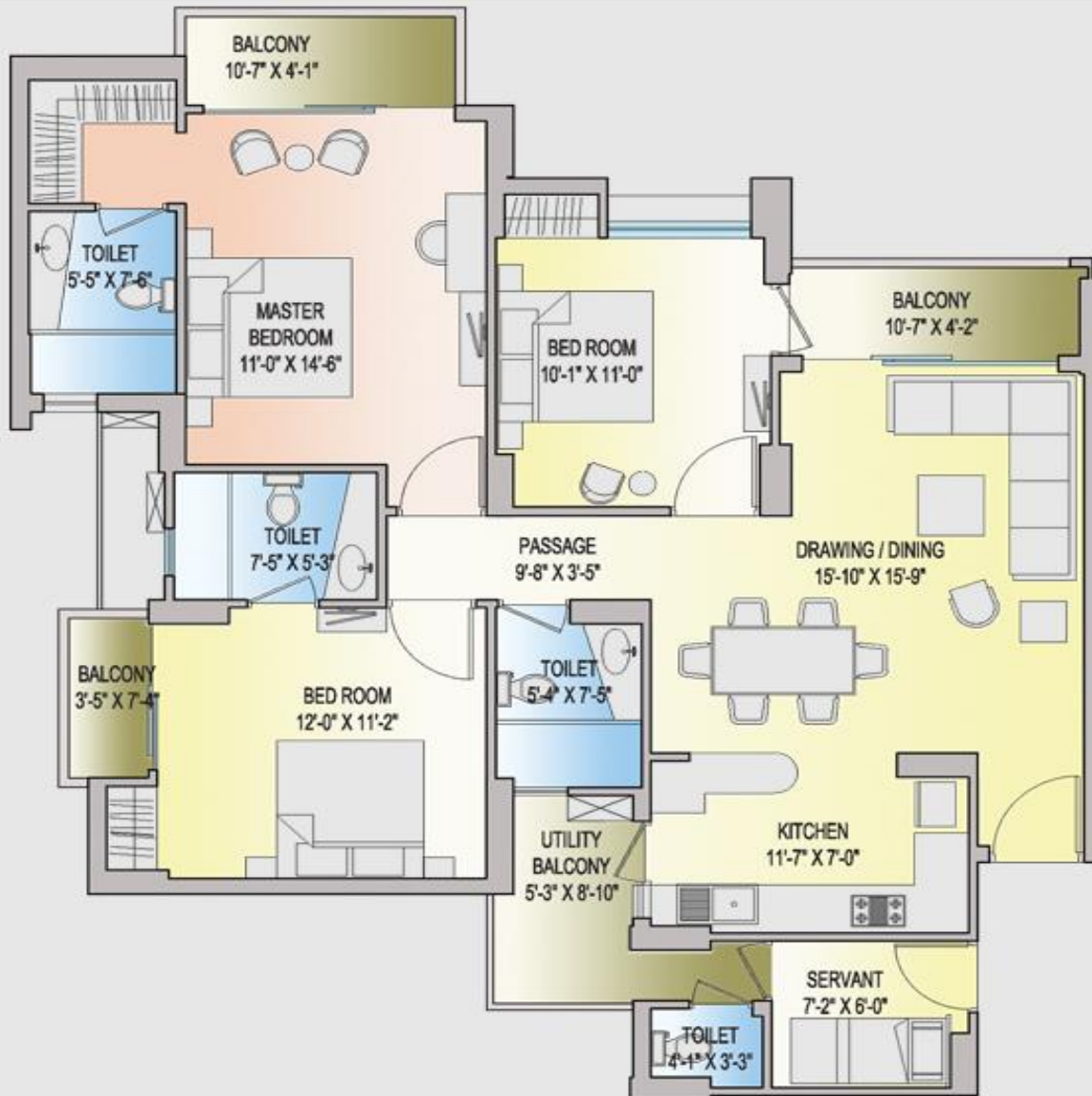
Saleable Area - 1521 Sq. Ft.

Built-up Area - 1216 Sq. Ft.

**Cherry
County**

**2/3/4 BHK APARTMENTS
NOIDA EXTENSION**

Floor Plans – 3BHK+3T+SR – 1620 sqft



3 BHK + 3T + Servant

Saleable Area - 1620 Sq. Ft.

Built-up Area - 1302 Sq. Ft.

**Cherry
County**

**2/3/4 BHK APARTMENTS
NOIDA EXTENSION**

Floor Plans – 4BHK+4T+SR – 2232 sqft

4 BHK + 4T + Servant

Saleable Area - 2232 Sq. Ft.

Built-up Area - 1778 Sq. Ft.



**Cherry
County**

**2/3/4 BHK APARTMENTS
NOIDA EXTENSION**

Company Price List

Rate	₹ 3,890/-				
Type	2BHK +2T	3BHK+2T	3BHK+3T	3BHK+3T+ UTILITY	4BHK+4T+ UTILITY
Size	891 sq.ft.	1206 sq.ft.	1521 sq.ft.	1620 sq.ft.	2232 sq.ft.
Floor - wise Cost in Lacs					
15th & Above	34.66	46.91	59.17	63.02	86.82
14th	34.75	47.03	59.32	63.18	87.05
12th	34.84	47.15	59.47	63.34	87.27
11th	34.93	47.28	59.62	63.50	87.49
10th	35.02	47.40	59.78	63.67	87.72
9th	35.11	47.52	59.93	63.83	87.94
8th	35.19	47.64	60.08	63.99	88.16
7th	35.28	47.76	60.23	64.15	88.39
6th	35.37	47.88	60.38	64.31	88.61
5th	35.46	48.00	60.54	64.48	88.83
4th	35.55	48.12	60.69	64.64	89.06
3rd	35.64	48.24	60.84	64.80	89.28
2nd	35.73	48.36	60.99	64.96	89.50
1st	35.82	48.48	61.14	65.12	89.73

ADDITIONAL CHARGES

Covered Parking	₹ 2,50,000/-
Club Membership	₹ 1,00,000/-
Lease Rent	₹ 85/-sq. ft.
Power Backup (1KVA)	Inclusive

PREFERENTIAL LOCATION CHARGES

Park Facing	₹ 100/- sq. ft.
Corner	₹ 50/- sq. ft.
Road Facing	₹ 40/- sq. ft.

Important Terms & Conditions

*

1. Cheque/Draft to be made in favour of M/s. County Infrastructures Pvt. Ltd. payable at New Delhi
2. Prices are subject to change without any prior notice at sole discretion of the company.
3. No refund against cancellation if less than 10% of total flat cost is received.
4. No escalation shall be charged for apartment sold.
5. The above area is super built-up area, which includes covered areas plus proportionate share of common area such as staircase, passage, community space, lift facilities, murties etc.
6. Plans, layout, sizes, specifications are subject to change/modification as may decided by the company/ architect or any other competent authority.
7. Booking is subject to detailed terms and conditions as given in buyer's agreement.
8. Registrations, stamp duty charges, service tax and any other taxes extra as per government norms.
9. The company and its agents does not endorse any kind of credit notes.
10. IFMS Rs. 20/ sq. ft. payable at the time of possession.
11. No plan change request will be entertained.
12. Post Dated Cheques to be given at the time of booking/Execution of agreement in Super Structure Plan.
13. Company reserves the right to withdraw the payment plan at its sole discretion without any prior notice.
14. Holiday Plan is subvention Bank Loan Scheme, No EMI till offer of possession. Buyers should have eligibility of 80% of flat cost else the difference of the sanctioned/disbursed amount has to be paid by the buyer within 30 days of booking.
15. Under the Super Structure plan the installment has to be paid on completion of the external plaster of the respective tower in which the flat is booked or within 9 months from the date of booking, whichever is later.
16. No penalty shall be paid for delayed possession under Holiday Payment Plan.



Inventory Availability Analysis

Tower	Subtower	891	1206	1521	1620	2232	Grand Total
A1	2	1	2				3
A2	1		9				9
	2		4				4
A3	2	1	3				4
A4	1		4				4
	2		4				4
A5	2	3	3				6
B1	1			4			4
	2			3	3		6
B2	1			5	3		8
	2			3	3		6
	6				1		1
B3	1				2		2
	2			13	24		37
B4	1			2	5		7
	2			15	25		40
B5	1			3	7		10
	2			3	3		6
B6	1			35	17		52
	2			6	4		10
	3			3			3
	4			2	2		4
	5			5	1		6
	6			3	1		4
	7			1			1
	8			2			2
	9			2	1		3
C1	1					18	18
	2					39	39
	3					1	1
Grand Total		5	29	110	102	58	304

